



£500,000- £525,000

Bear Estate Agents are pleased to welcome this well-designed and spacious family home, offering modern living arranged over three floors in a popular and convenient location. Finished to a high standard throughout, the property has been thoughtfully laid out to suit contemporary family life, combining generous room sizes with practical features.

To the ground floor, the property opens with an entrance hallway providing excellent storage and a convenient WC. There is a separate front lounge, while to the rear sits a fully modernised kitchen/family room forming the heart of the home. This impressive space includes a central island, quartz worktops, a range of luxury fitted units, and integrated appliances including a fridge freezer, dishwasher, oven, and microwave. Aluminium bi-fold doors open onto the rear garden, creating a bright and open living environment ideal for both everyday use and entertaining.

On the first floor, there are three well-proportioned bedrooms, along with a modern family bathroom and an en-suite to one of the bedrooms. A useful utility cupboard is also accessed from the landing, providing additional storage. The

- Semi-Detached Home Set Across Three Floors
- Generous Driveway
- High Specification Throughout
- Ensuite To Bedroom One
- Close To Hockley Station
- Four Great Size Bedrooms
- Luxury Family Bathroom and Two En-Suites
- Stunning Kitchen Family Room with Integrated Appliances
- Large Garden Outbuilding With Power

Ashingdon Road

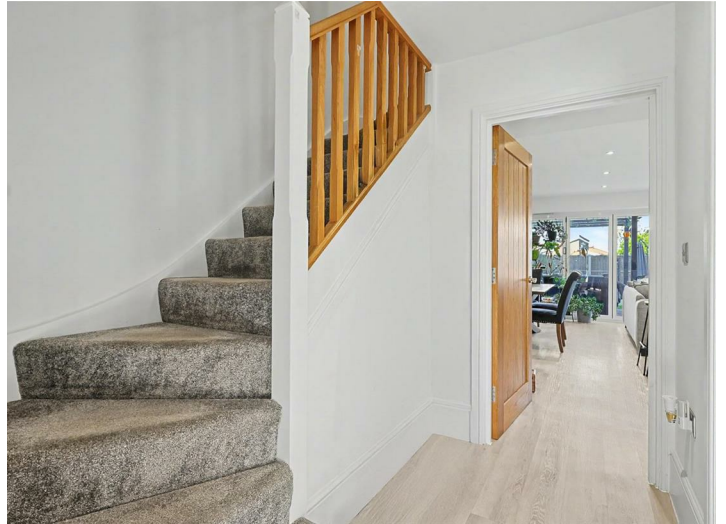
Rochford

£500,000

Guide Price



Ashingdon Road



Entrance Hallway

Doors to lounge, downstairs WC and the kitchen family room. Carpeted stairs to first floor.

Ground Floor WC

Low level WC, vanity unit wash basin, chrome heated towel rail, tiled flooring and tiled walls.

Lounge

12'0 x 9'3

Smooth ceiling with inset spotlights, double glazed window to front, power points and wall mounted radiator.

Kitchen Family Room

21'6 x 16'71

Smooth ceilings with inset spotlights, double glazed bi-folding doors to the rear opening to the garden, understairs storage cupboard, wall mounted radiator, wall and base level units with quartz worktops and a centre island with breakfast bar, integrated fridge freezer, integrated dishwasher, integrated oven and microwave, four ring induction hob with extractor fan and quartz splash back.

First Floor Landing

14'65 x 3'42

Carpeted stairs to second floor, wall mounted radiator, carpeted flooring throughout.

Bedroom Two

14'45 x 10'13

Smooth ceiling with pendant ceiling light, double glazed window to rear overlooking garden, wall mounted radiator, carpeted throughout and access to ensuite bathroom.

En-Suite

Walk in Shower, vanity unit wash basin, low level WC, heated chrome towel rail, tiled floor and tiled walls.

Bedroom Three

14'28 x 10'12

Smooth ceiling with pendant ceiling light, double glazed window to front, wall mounted radiator and carpeted flooring throughout.

Bedroom Four

10'68 x 6'35

Smooth ceiling with pendant ceiling light, double glazed window to rear, wall mounted radiator and carpeted flooring throughout.

Second Floor Landing

Carpeted flooring throughout and access to bedroom one.

Bedroom One

18'77 x 13'44 > 10'45

Double glazed Velux windows to rear, double glazed Velux window to front, ample eaves storage, carpet, radiators and door to ensuite bathroom.

En-Suite Shower Room

8'21 x 5'92

Double glazed Velux window to rear, walk in shower room, vanity unit wash basin, low level WC, tiled floor and tiled walls.

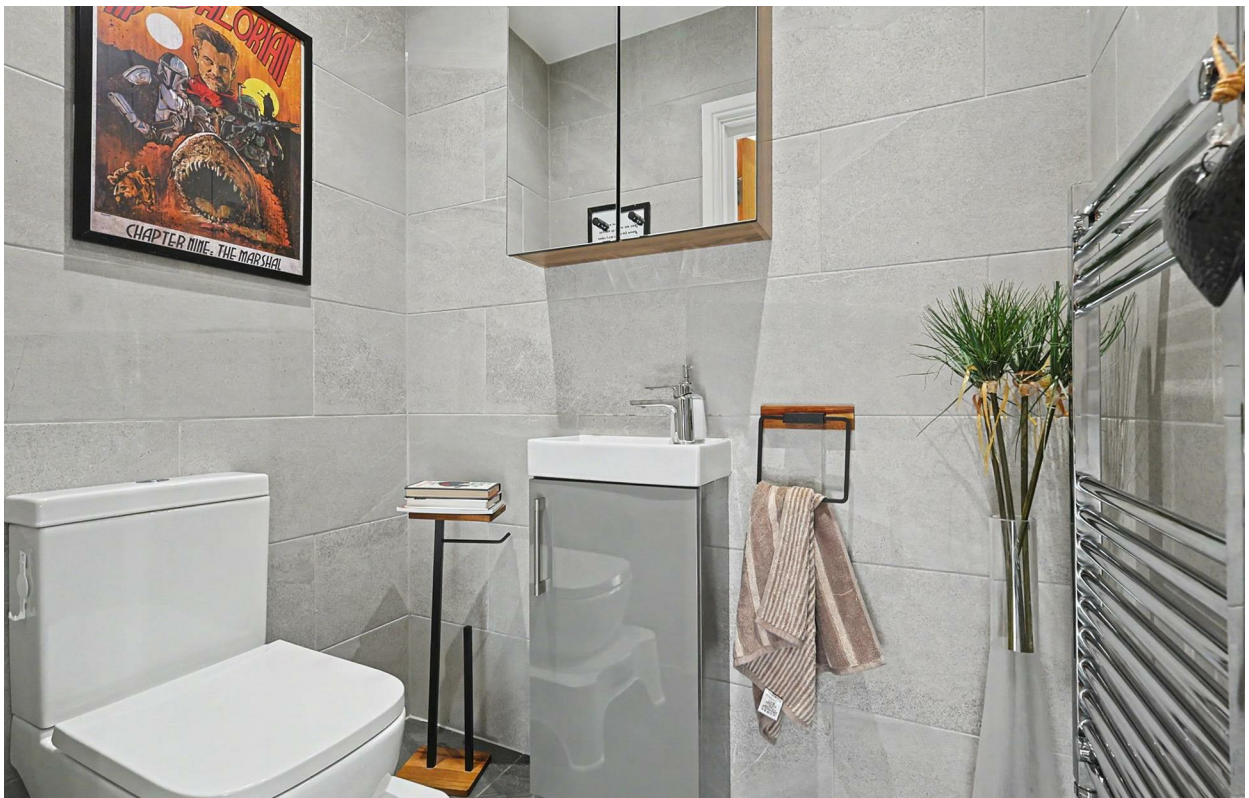
Rear Garden

A large garden commencing with a raised patio area with a path to a further patio area to the rear with the remainder laid to lawn, outbuilding with power, outside tap, side access to front driveway.

Agents Notes

Every care has been taken to ensure the accuracy of these details, however, they do not form part of any offer or contract and should not be relied upon as statements of fact. Measurement, descriptions and other information are provided in good faith and for guidance only. Prospective purchasers should verify all details independently. We have not tested any services, appliances or systems at the property.

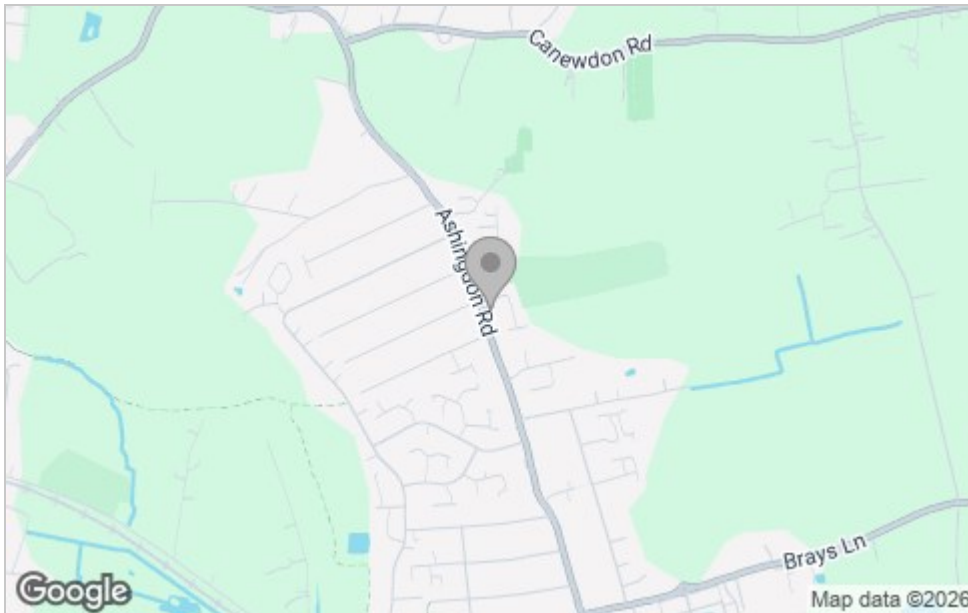
Council Tax Band - F



Floor Plan



Area Map



Viewing

Please contact our Hockley Office on 01702 416476 if you wish to arrange a viewing appointment for this property or require further information.

These particulars, whilst believed to be accurate are set out as a general outline only for guidance and do not constitute any part of an offer or contract. Intending purchasers should not rely on them as statements of representation of fact, but must satisfy themselves by inspection or otherwise as to their accuracy. No person in this firm's employment has the authority to make or give any representation or warranty in respect of the property.

11 Main Road, Hockley, Essex, SS5 4QY

Office: 01702 416476 hockley@bearestateagents.co.uk <https://www.bearestateagents.co.uk>

Energy Efficiency Graph

